



Schedule A - Bayham Structure Plan

Settlement Areas

- Tier 1
- Tier 2
- Tier 3

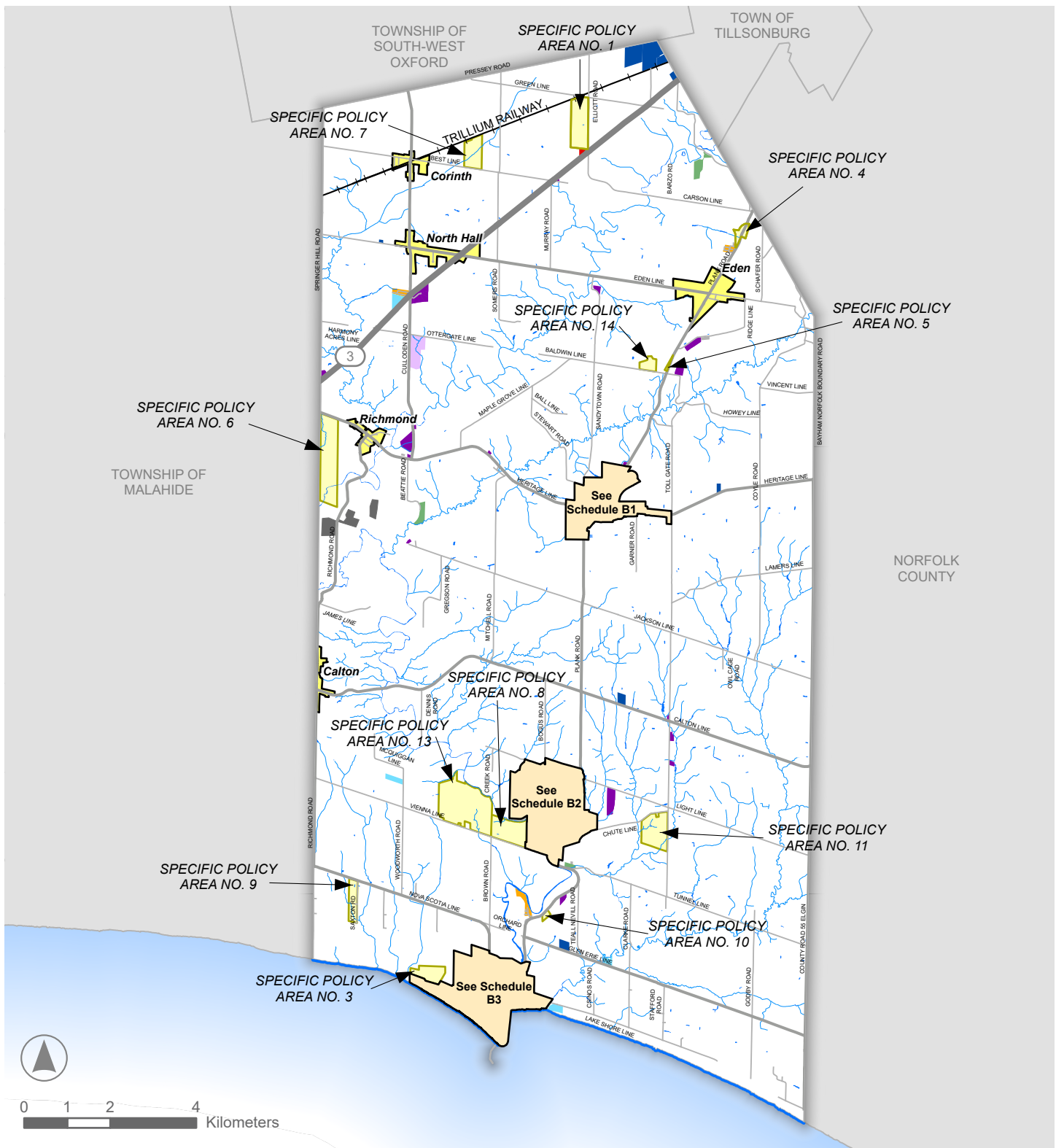
- Rural Area
- Strategic Employment Areas

Base Features

- Provincial Highways
- County Roads
- Local Roads



*Please note that this Schedule reflects the newly 'adopted' County of Elgin Official Plan that is currently under review and not approved by the Ministry of Municipal Affairs and Housing



Schedule B - Land Use Plan

Land Use

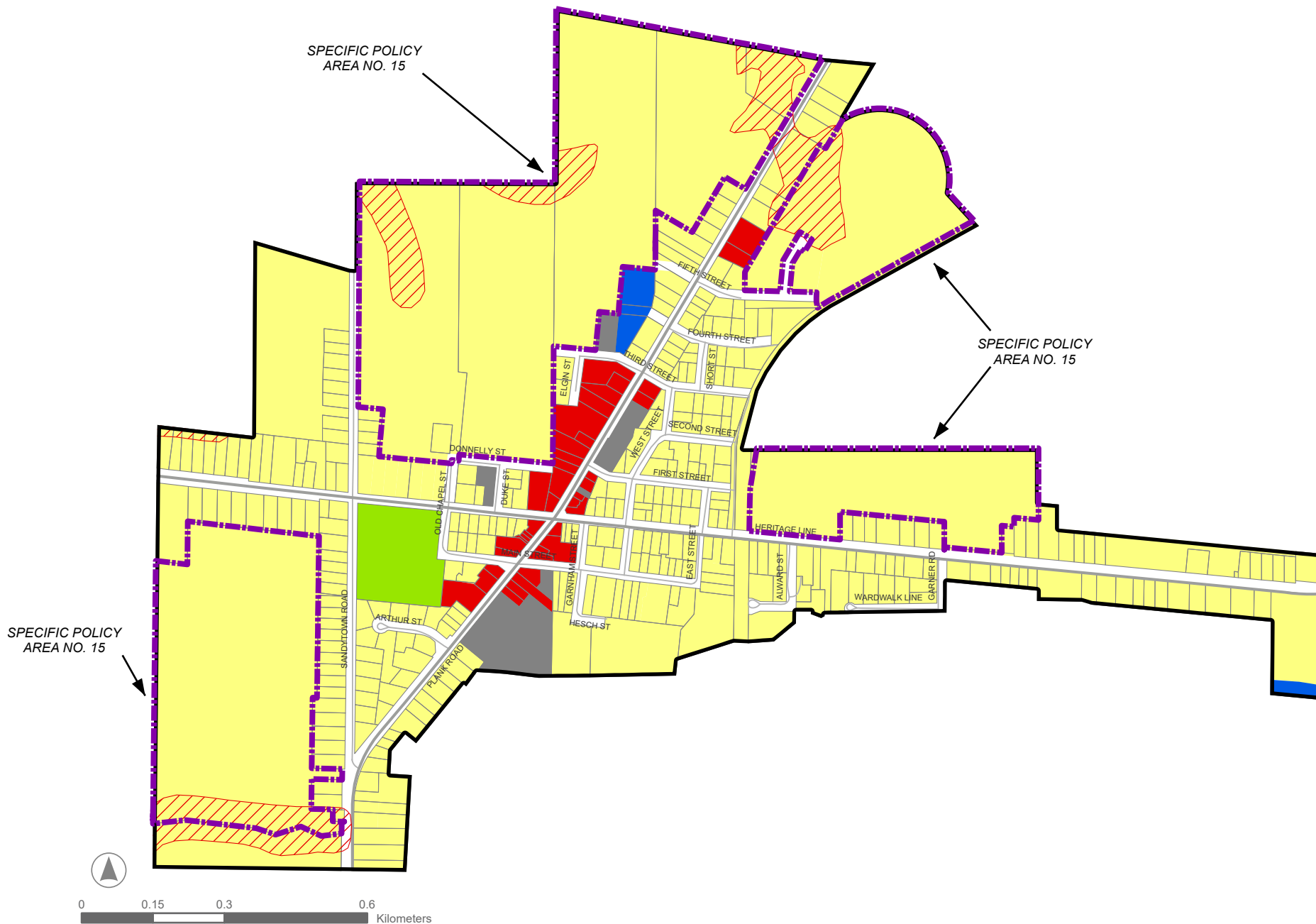
	Agricultural Area		Recreational
	Estate Residential		Industrial
	Mobile Home Parks		Conservation Lands
	Seasonal Travel Trailer and Campgrounds		Licenced Pits and Quarries
	Institutional		Specific Policy Areas
	Commercial / Highway Commercial		Hamlets

Base Features

	Provincial Highways
	County Roads
	Local Roads
	Railway
	Watercourse / Shoreline



*Please note that this Schedule reflects the newly 'adopted' County of Elgin Official Plan that is currently under review and not approved by the Ministry of Municipal Affairs and Housing



Schedule B1 - Straffordville: Land Use and Constraints Plan

Land Use

- Residential
- Commercial
- Institutional
- Industrial
- Open Space

Constraints

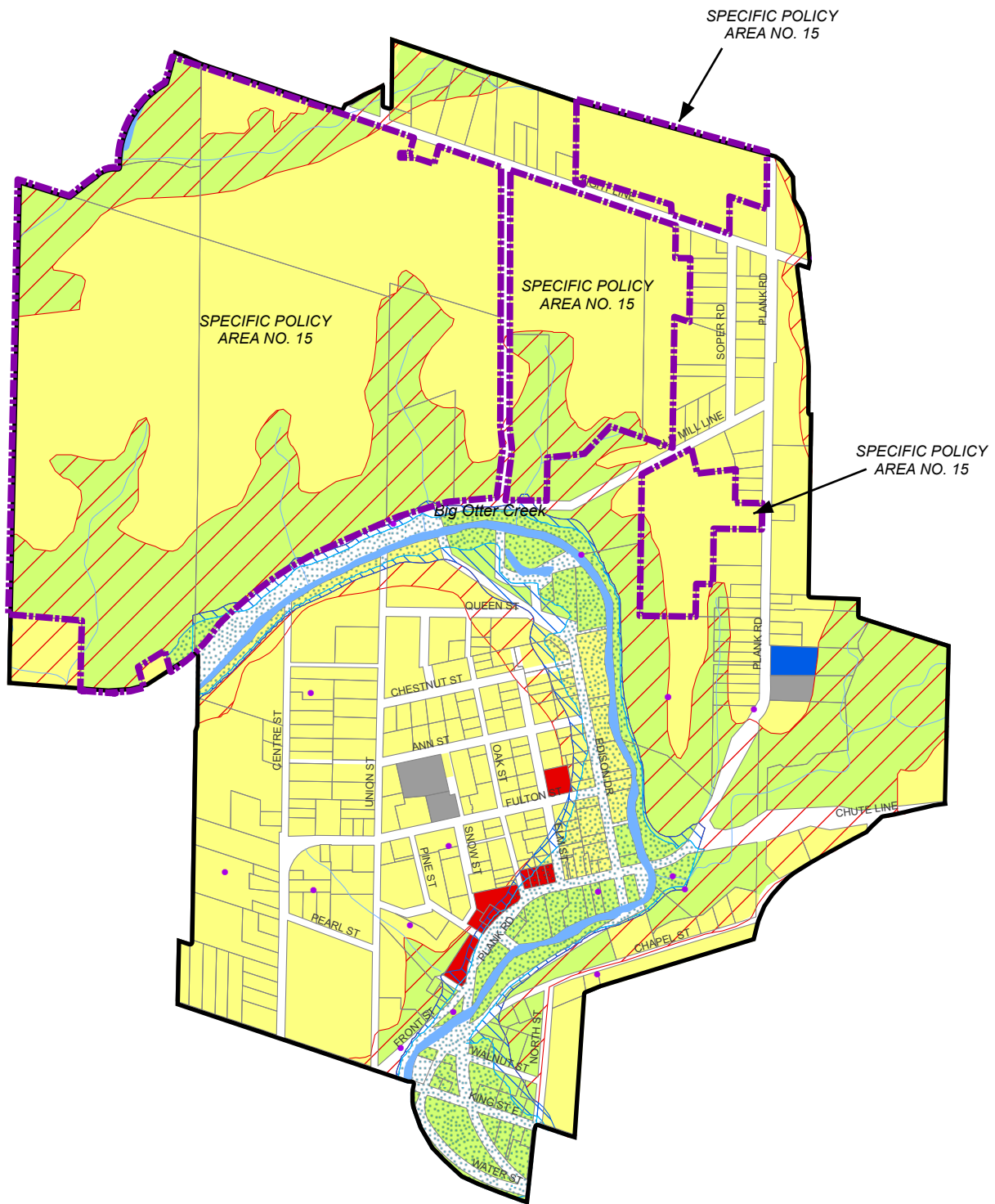
- Hazard Lands

Base Features

- County Roads
- Local Roads

- Specific Policy Areas





Schedule B2 - Vienna: Land Use and Constraints Plan

Land Use

- Residential
- Commercial
- Institutional
- Industrial
- Open Space
- Specific Policy Areas

Constraints

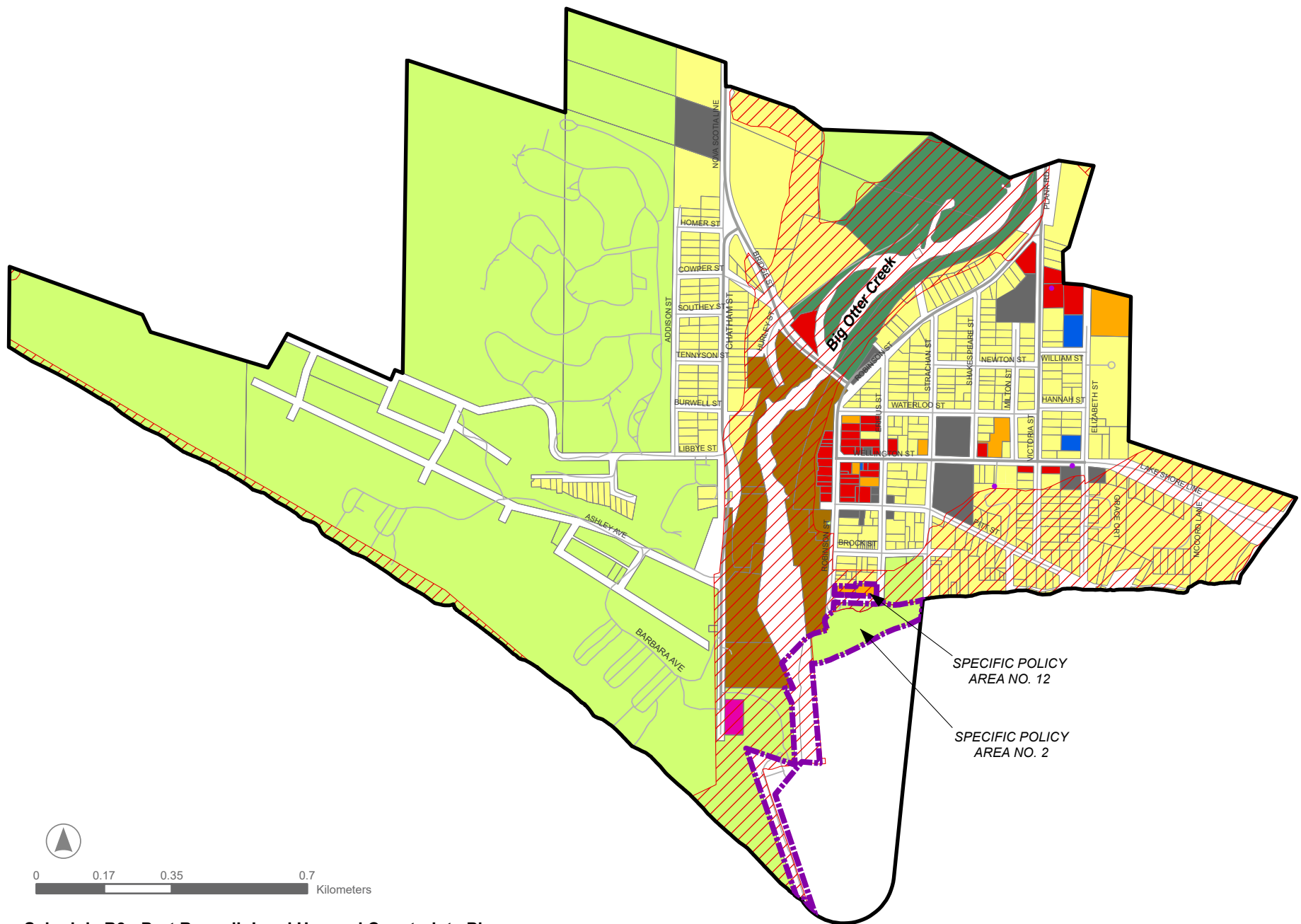
- Hazard Lands
- Flood Fringe
- Floodway
- Existing or Closed Petroleum Wells

Base Features

- County Roads
- Local Roads
- Watercourse



*Please note that this Schedule reflects the newly 'adopted' County of Elgin Official Plan that is currently under review and not approved by the Ministry of Municipal Affairs and Housing



Schedule B3 - Port Burwell: Land Use and Constraints Plan

Land Use

- | | |
|--|--|
| Residential | Industrial |
| Multi-Unit Residential | Institutional |
| Harbour Residential / Commercial | Open Space |
| Commercial | Conservation Lands |
| | Specific Policy Areas |

Constraints

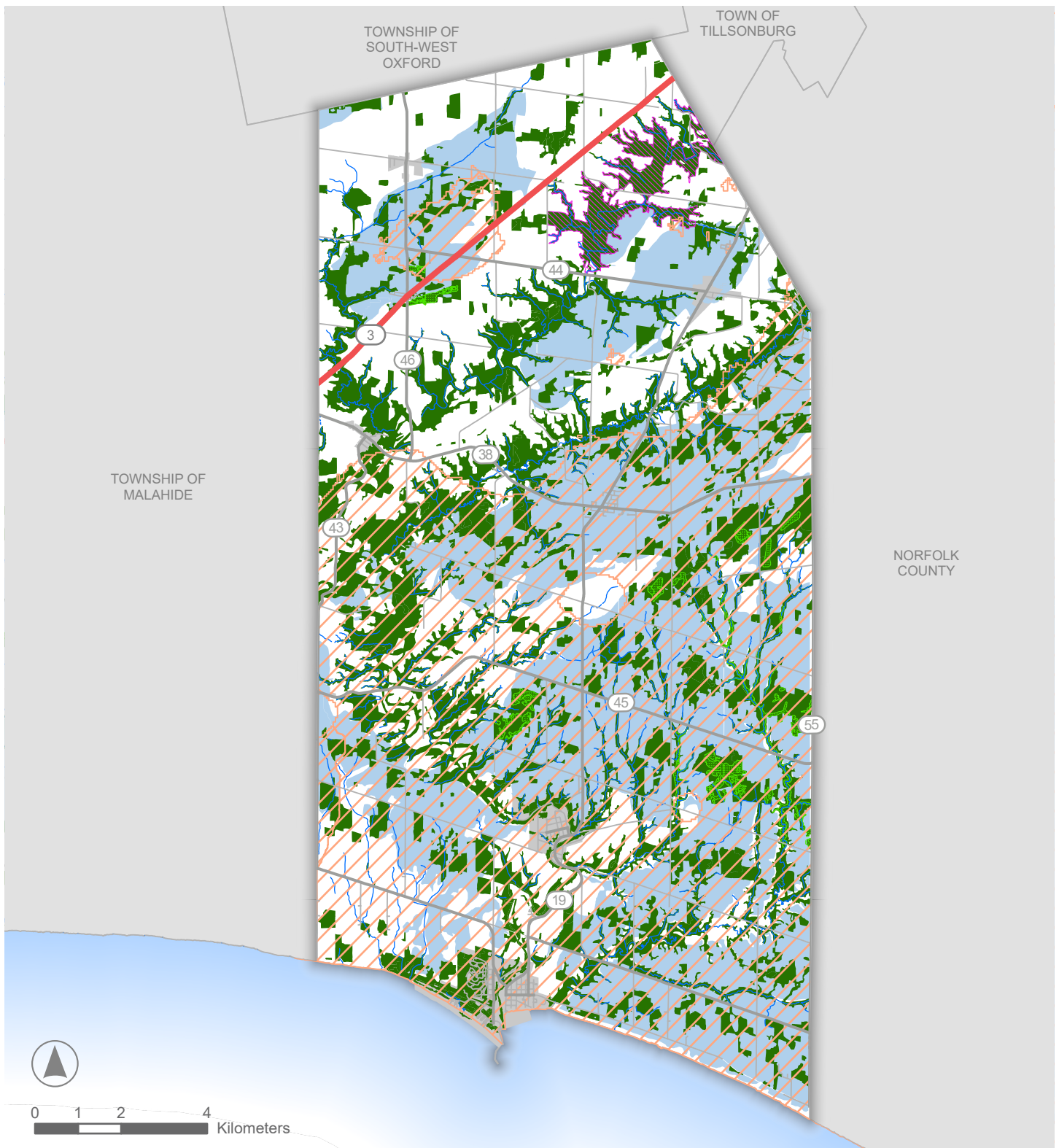
- | |
|--|
| Hazard Lands |
| Sewage Treatment Facility |
| Existing or Closed Petroleum Wells |

Base Features

- | |
|---|
| County Roads |
| Local Roads |



*Please note that this Schedule reflects the newly 'adopted' County of Elgin Official Plan that is currently under review and not approved by the Ministry of Municipal Affairs and Housing



Schedule C - The Natural System

- | | | |
|-----------------------------------|---------------------------------------|----------------------|
| Natural Heritage System | Significant Groundwater Recharge Area | Base Features |
| Provincially Significant Wetlands | Highly Vulnerable Aquifer | Provincial Highways |
| ANSI | Watercourse | County Roads |
| | | Local Roads |
| | | Settlement Areas |



*Please note that this Schedule reflects the newly 'adopted' County of Elgin Official Plan that is currently under review and not approved by the Ministry of Municipal Affairs and Housing



Schedule D - Richmond: Water Resources

Wellhead Protection Area

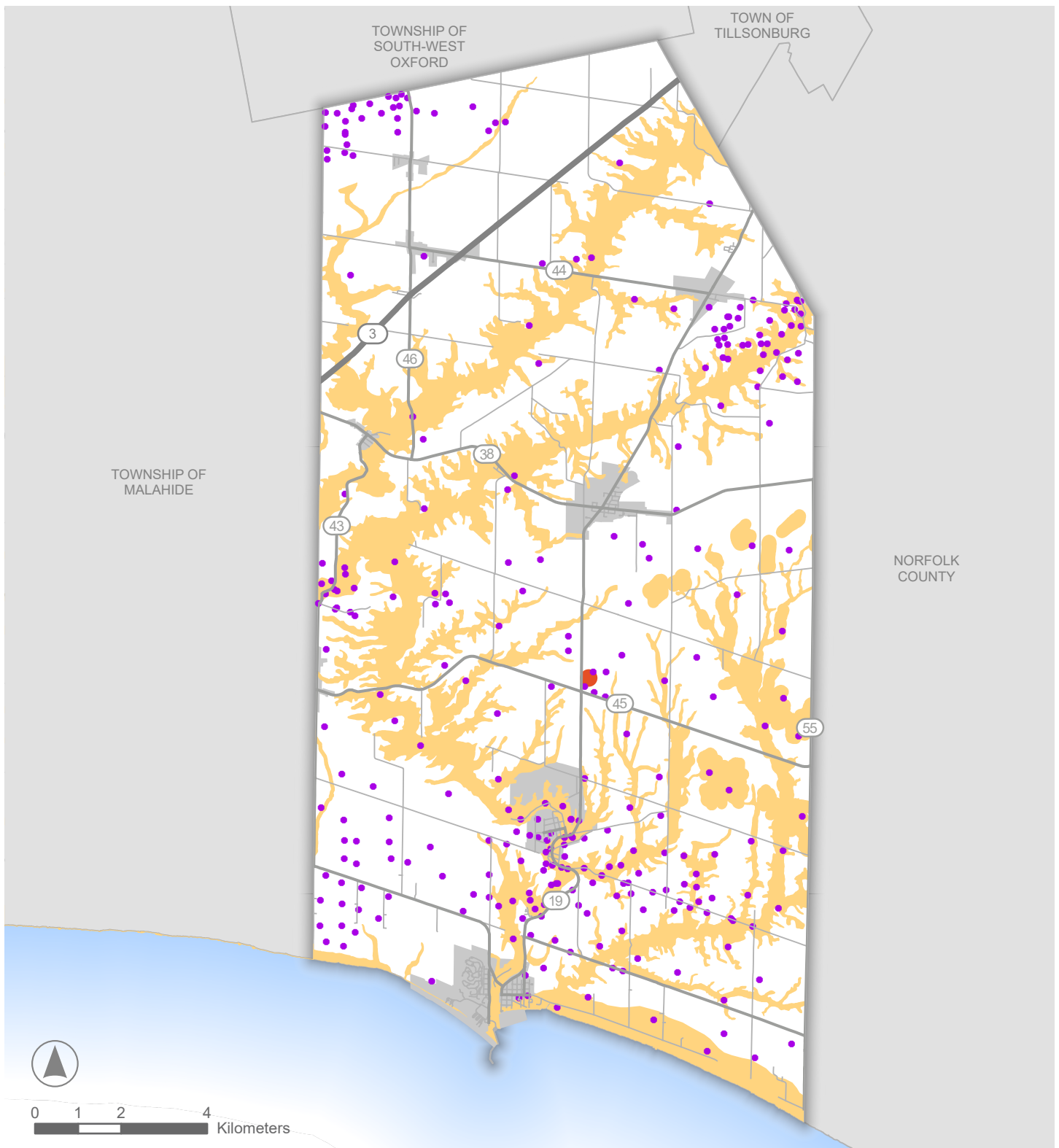
- Wellhead Protection Area - A
- Wellhead Protection Area - B
- Wellhead Protection Area - C

Base Features

- County Roads
- Local Roads
- Municipal Boundary



*Please note that this Schedule reflects the newly 'adopted' County of Elgin Official Plan that is currently under review and not approved by the Ministry of Municipal Affairs and Housing

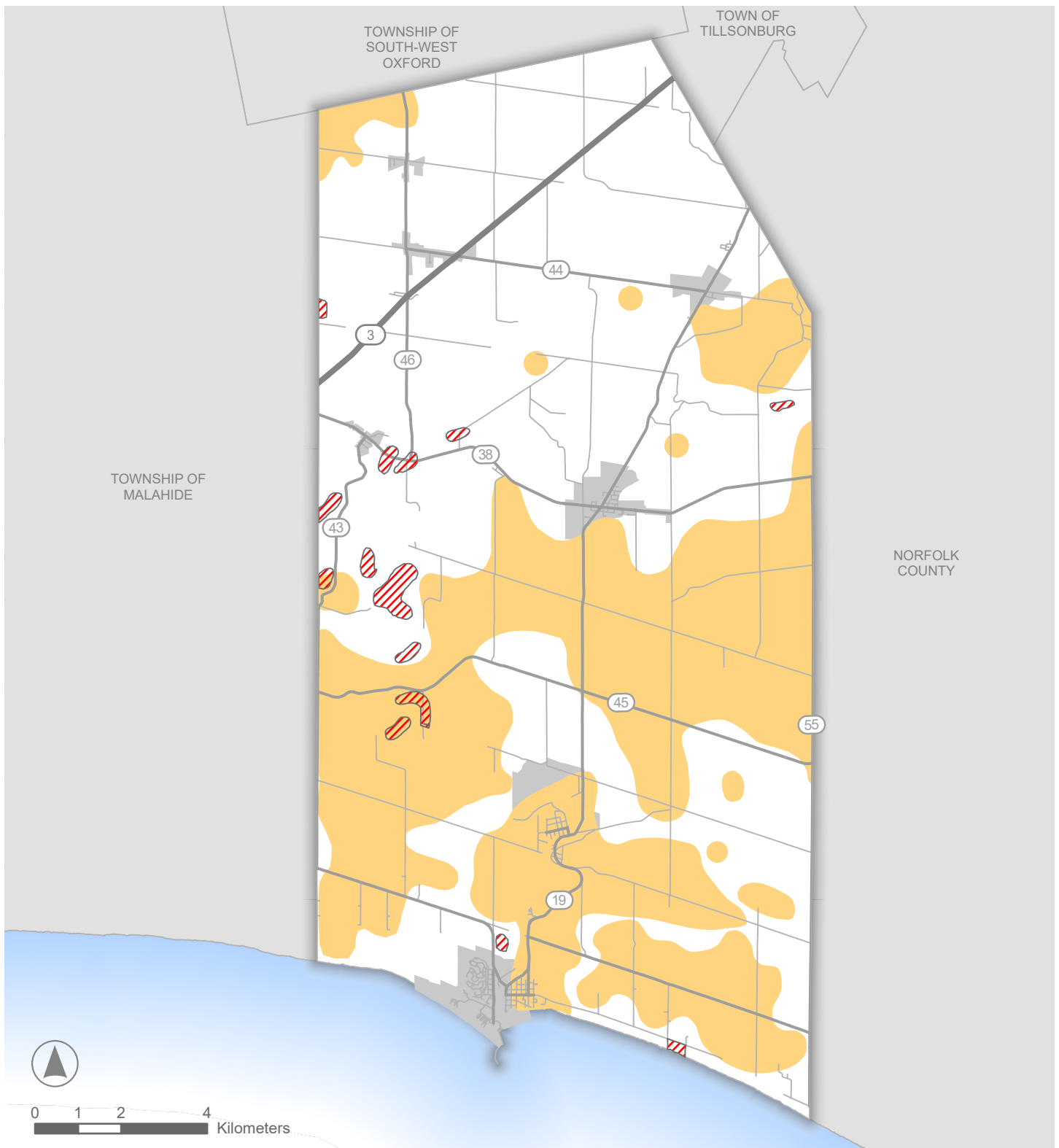


Appendix 1 - Development Hazards

- | | |
|---|--|
| Hazard Lands | Base Features |
| Former Waste Transfer Site | Provincial Highways |
| Existing or Closed Petroleum Wells | County Roads |
| | Local Roads |
| | Settlement Areas |



*Please note that this Appendix reflects the newly 'adopted' County of Elgin Official Plan that is currently under review and not approved by the Ministry of Municipal Affairs and Housing



Appendix 2 - Natural Resource Management Areas

- | | |
|-------------------------|----------------------|
| Aggregate Resource Area | Base Features |
| Petroleum Pools | Provincial Highways |
| | County Roads |
| | Local Roads |
| | Settlement Areas |



*Please note that this Appendix reflects the newly 'adopted' County of Elgin Official Plan that is currently under review and not approved by the Ministry of Municipal Affairs and Housing